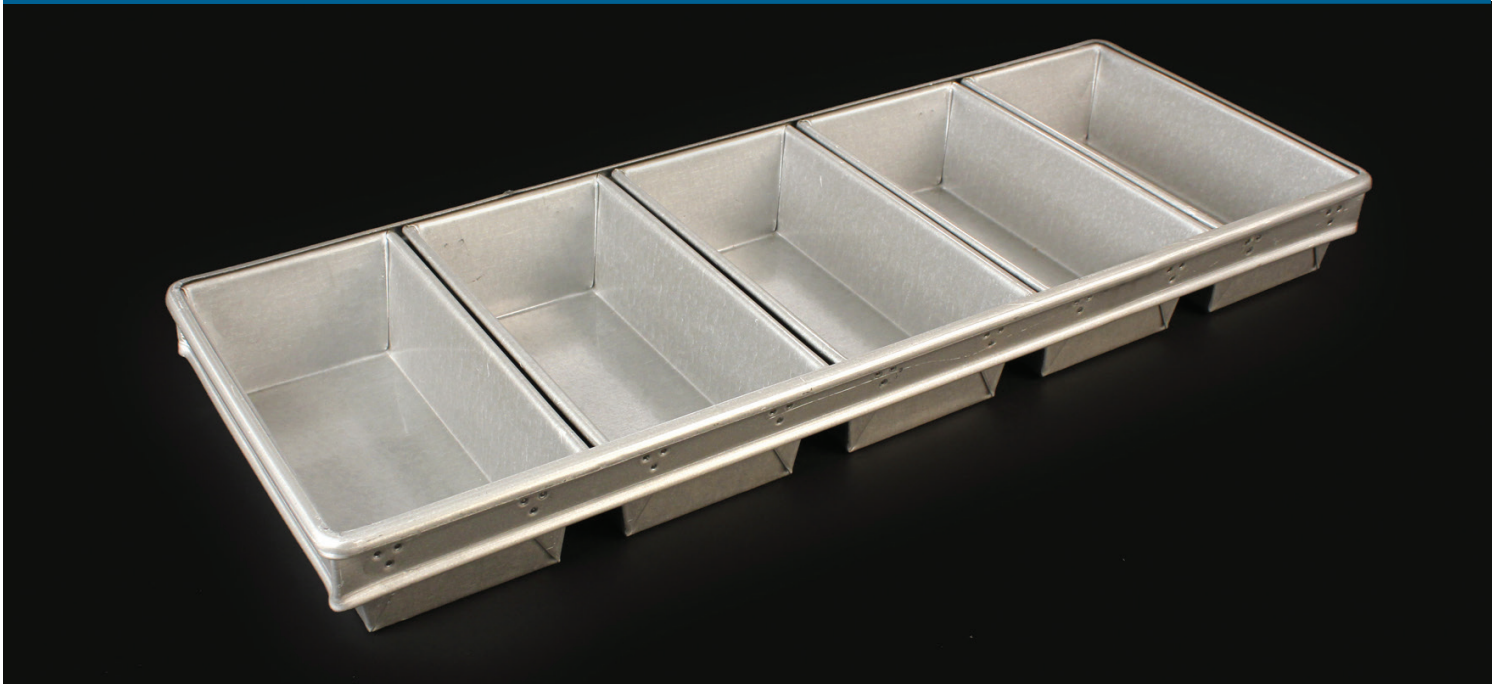


Bakery Strap Pans



Features and Benefits

- ◆ Open-topped bread pans create perfect loaves
- ◆ Screen is glazed for easier bread removal
- ◆ Available in multiple sizes
- ◆ Commercial glazed tin-coated steel

Strapped pans are an ideal fit for commercial ovens

Prepare perfect loaves in commercial ovens with open top Bakery Strap Pans. Bakery Strap Pans keep standard bread pans securely attached to one another for easy removal from oven. These pans are ideally sized to allow for two rows of pans to bake side-by-side in most commercial ovens.

Glazed tin-coated steel allows for easy removal of loaf after baking. Additional pan styles available, call for details.

Specifications

Item No.	Style	Dimensions	Pack
9922515491	4-Strap	8.5" W x 4.5" L x 2.75" H	1
9922516009	5-Strap	9" W x 4.5" L x 2.75" H	1

Additional sizes and styles can be made to order (minimum quantities apply.)

20190411

For more information,
call **800.422.2547**
or visit www.siffron.com

siffron[™]
always on